



MAP & GUIDE



ABC QUICK CHECK

A - AIR

Tires should feel hard; find the recommended pressure on sidewall of tire.



B - BRAKE

Working properly.

C - CHAIN/CRANK

Clean/lubed chain, no extra "play" in crank.

QUICK - QUICK RELEASE

Check those quick releases to ensure they're locked!

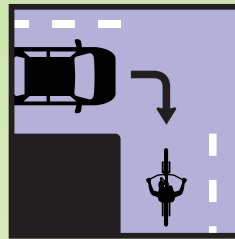
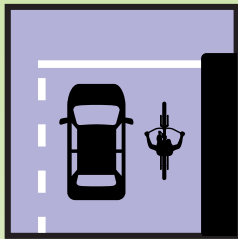
CHECK EVERYTHING

Check to make sure everything feels solid and nothing is loose that could get caught in the chain or spokes.



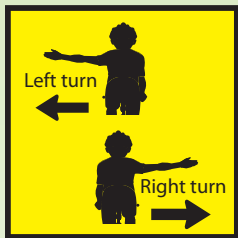
BIKE LAWS & SAFETY

Cyclists should obey all traffic laws, signs and signals. Your bike is considered to be a vehicle under Florida state law.



Go with the Flow.

Never ride against traffic. Ride single file with the flow of traffic.



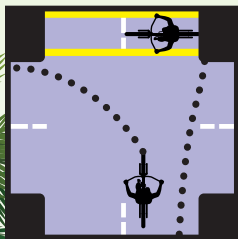
Use Hand Signals.

Signal all turns and stops ahead of time. Check over your shoulder, then make your intended move when its safe to do so.



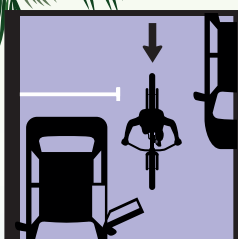
Yield to Pedestrians.

Give an audible signal when you pass a pedestrian or someone traveling slower than you.



Choose the Best Way to Turn Left.

Turn left wisely; look back, signal, move into the left lane and turn. OR, ride straight to the far side crosswalk, turn and wait for the light to change and use the crosswalk.



Watch Out for Opening Car Doors.

Be careful for opening doors from parked cars. Motorists can unexpectedly open doors. Ride a car door width away from parked vehicles.



Be Visible at Night.

Always use a strong white headlight, rear lights and reflector at night. Wear reflective clothing.

MULTI-USE ROADS

- Obey all local regulations when using a multi-use road.
- Use common sense and courtesy on the road
- Ride, walk and skate on the right side of the road with traffic flow.
- Obey traffic control signs and markings on road.
- Pass on the left when road is clear of traffic.
- Give audible warning before overtaking other road users.

Ring your bell

Loudly and clearly call out

"Bicycle on your left."

- Listen up! Headphones prevent you from hearing warnings.
- Use hand signals to indicate turns and stops.
- Do not stop on the road, blocking other users.
- Ride single file so that other users can pass safely.
- Look for traffic before entering a road.
- Watch for the unexpected, especially with kids and dogs.
- Slow down when road is crowded.
- Travel at speeds that are appropriate to the conditions.

BICYCLING ON FLORIDA ROADS

- Ride in the right lane except when passing another vehicle, preparing for a left turn or avoiding hazards.
- Ride on paved shoulders and bike lanes when present and free of hazards.
- Ride no more than two abreast, returning to single file if riding two abreast would impede the flow of traffic.
- Make eye contact with drivers at stops.
- Assume motorists do not see you and that you don't have the right of way.
- Wear passive safety equipment to protect yourself - helmets, glasses, gloves, visible clothing, etc.
- Expect the unexpected; your first responsibility is to be safe.





BIKE ROUTE

MAP LEGEND

- Bike Route
- Extension Road
- County Road
- Residential Street
- Bike Rental
- Parks
- Point of interest
- Beach Access
- Public Bathroom



0 1/4
 Miles

0 1/4
 Miles

2 Minute Bike Ride

0 1/4
 Miles

5 Minute Bike Walk

Bean Point



Tampa Bay

Bay Front Park

City Pier Park

Gulf Front Park

Bimini Bay

Gulf of Mexico

Holmes Beach

